
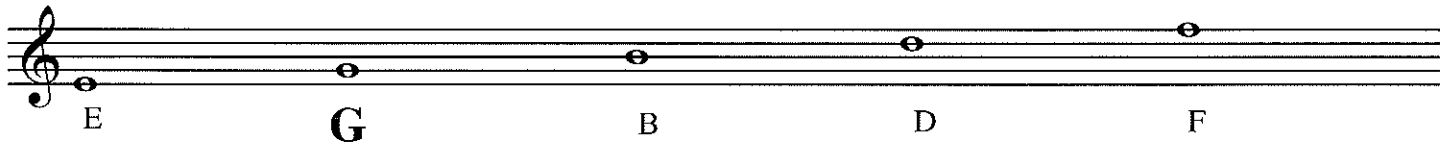


Clefs and Pitch Names

The system of five lines and four spaces is called a STAFF.
Basic pitch names are designated by the alphabet from A to G
(A-B-C-D-E-F-G).

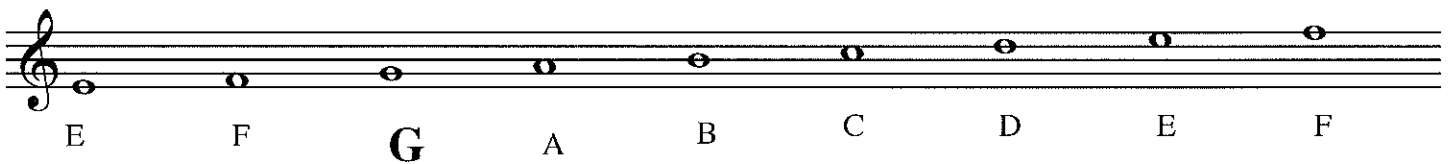
The TREBLE clef , or G clef, designates the second line of the staff as "G"
so the lines are named:



And the spaces are named:

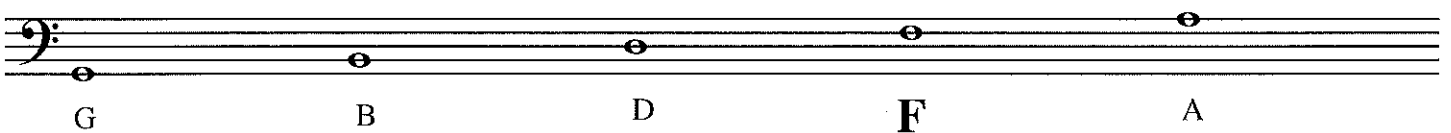


And in order from the bottom line to the top line:

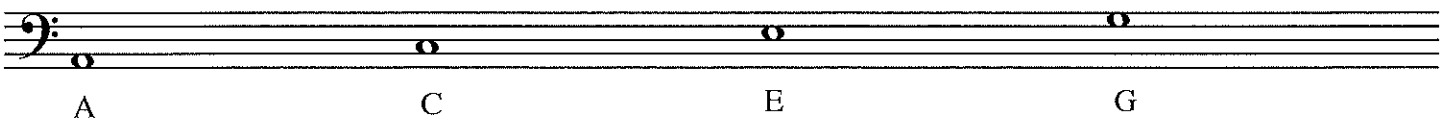


The BASS clef , or F clef, designates the fourth line of the staff as "F"

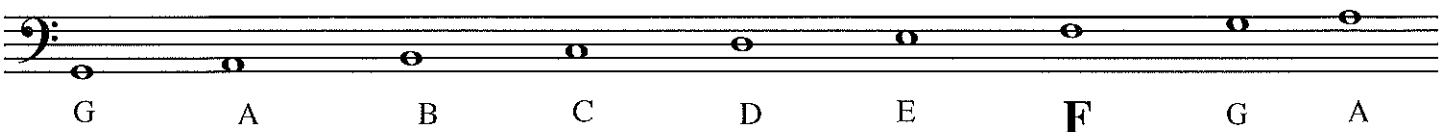
so the lines are named:



And the spaces are named:

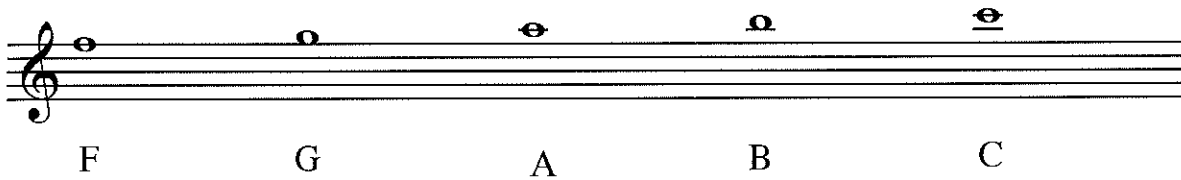


And in order from the bottom line to the top line:



LEDGER LINES are short lines that can be added ABOVE AND BELOW the staff. They function in the same way a regular staff line does.

The top line of the staff using the Treble clef is F and the space above it is G. If we add a LEDGER LINE we can continue up to A and so on:



We can also add LEDGER LINES below any staff. The bottom line of the staff using the Bass clef is G and the space below it is F. If we add a LEDGER LINE we can continue down to E and so on:

