



# Review or Assessment Music Challenges for J/I Classes

# Note Reading Worksheet

## Treble Clef Exercise #1

E G B D F  
Every Good Boy Does Fine

LINES: Write each note's name underneath

F A C E

The letter names of the spaces spell out the word FACE

SPACES: Write each note's name underneath

ALL NOTES: Write each note's name underneath. Each measure's notes spell a word.

## Name Pitches I - Treble Staff

Name each pitch.

1



2



3



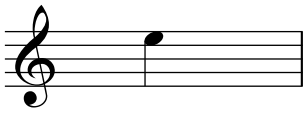
4



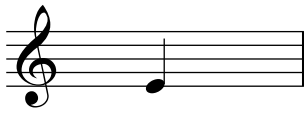
5



6



7



8



9

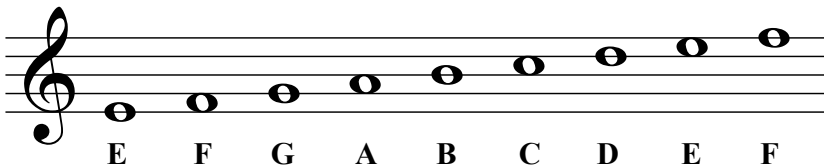


# The Staff - Treble Clef

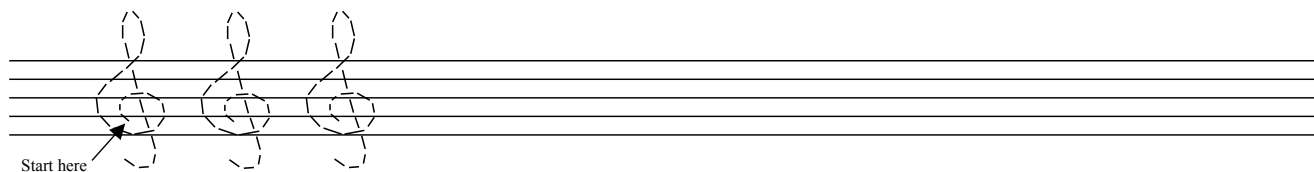
A **clef** appears at the beginning of each staff. The clef shown here is a **treble clef**.



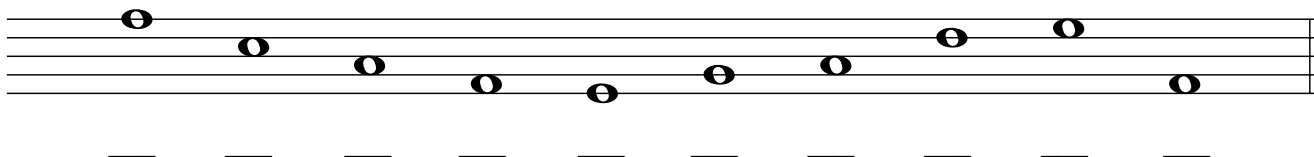
Each note on the treble clef staff has a letter name.



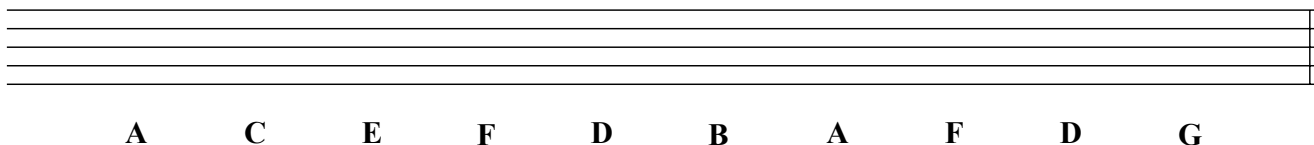
1. Practice drawing the treble clef sign by tracing over the guidelines. Draw five more in the remaining space.



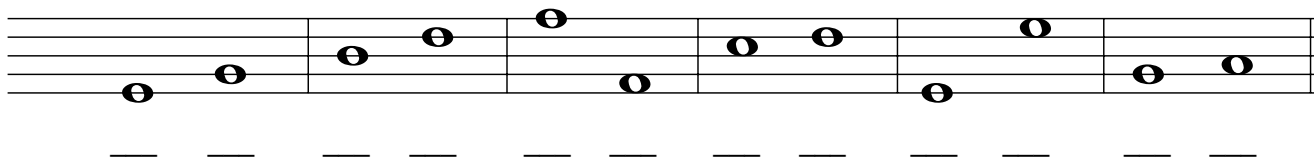
2. Draw a treble clef at the beginning of the staff and write the letter name of each note.



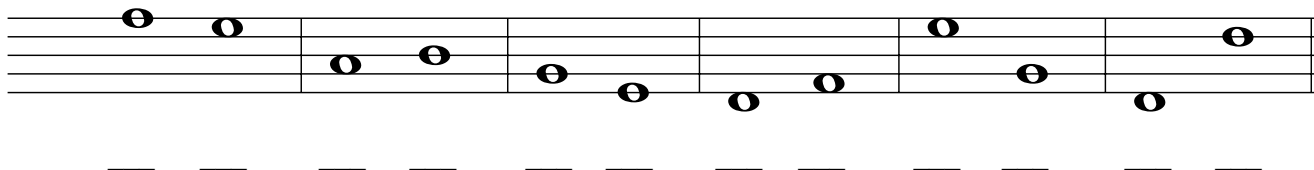
3. Draw the treble clef at the beginning of the staff and then draw the notes indicated.  
If a note can be drawn in more than one place on the staff, choose which one you want to draw.



4. Draw the treble clef at the beginning of the staff.  
Write the letter name for each note, then circle the higher note in each pair.



5. Draw the treble clef at the beginning of the staff.  
Write the letter name for each note, then circle the lower note in each pair.



# Note Reading Worksheet

## Treble Clef Exercise #2

E G B D F

Every Good Boy Does Fine

LINES: Write each note on the correct line using quarter notes. Notes below B should have a stem on the right side facing up. Notes above B have stems facing down from the left side. The stem on the note B can face either direction

E B G D G D B F B F E G F D B E

E G B G G B D B E B G F E F D B

F A C E

The letter names of the spaces spell out the word FACE

SPACES: Write each note in the space. Use quarter notes again. Make sure the stems are correct.

F E C E A C A E C A F A F A C F

A C A C F E F E E C A F E A C A

ALL NOTES: Write each note on the line or space. This time write half notes.


B E A D A G E C A G E B A D


B E G A C E B E D D A D

F E E D C A B B A G E D E A D B A G G A G E

# Musical Words - Treble Clef I

Each group of notes spells a word.  
Write the word that each group spells.


Example   
B E D

1 


— — —

2 


— — —

3 

— — —

4 

— — —

5 


— — —

6 


— — —

7 


— — —

8 


— — —

9 

— — —

10 

— — —

11 

— — —

12 


— — —

13 


— — —

14 

— — —

15 


— — —

16 

— — —

17 

— — —

18 

— — —

Finale® Worksheets, Copyright © 2009 by MakeMusic, Inc.

MakeMusic grants permission to duplicate this worksheet for non-profit, educational use only, provided each copy includes this copyright notice.  
Copies may not be sold or included in any materials offered for sale to the general public.

# Spell Words with Treble Pitches

Write the words that the pitches spell.

1



2



3



4



5



6



7



8



9



10



11



12



13



14



15



16



17



18



19



20



21



22



23



24



25



26



27





28






# A MUSICAL STORY




Complete the story by filling in the note names underneath each measure.

I went on a fun trip with my friend. We packed our 



and climbed into a  . Along the way we stopped at a 

to  our  . We had an 

 and 

. Ugh! The food was really  . We felt like we should  in 

so I  my friend to cut the 

and return home. I feared that i would  and felt like an animal in a 

. Suddenly I awoke and found myself at home in  . It had only been a 

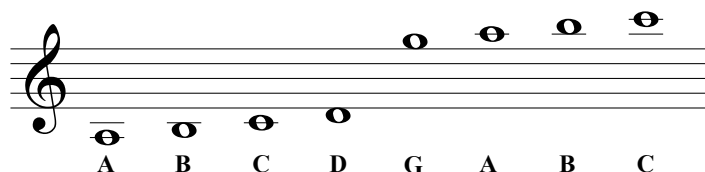
dream.



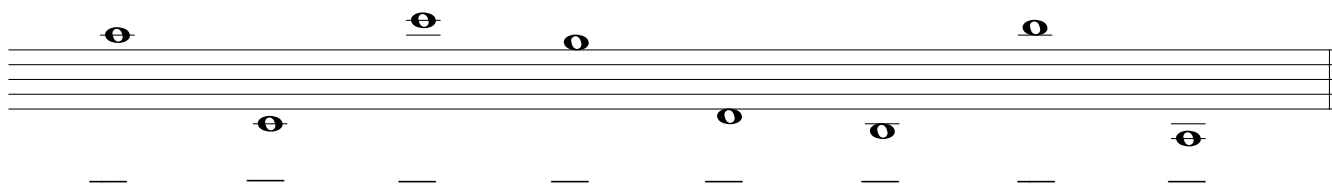
# Treble Clef - Ledger Lines

**Ledger lines** can be used to extend the upper and lower ranges of a staff.

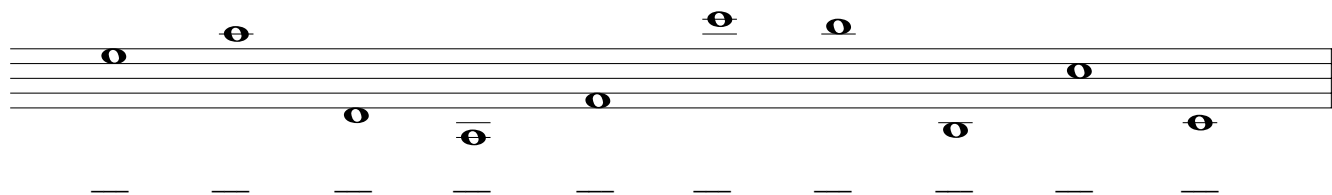
This example includes notes which can be written above and below the treble clef using **ledger lines**.



1. Draw a treble clef at the beginning of the staff and write the letter name of each note.

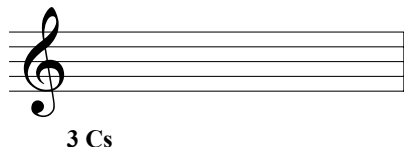
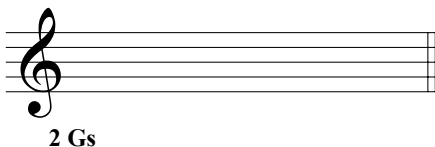
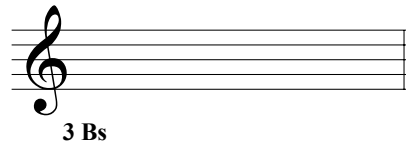
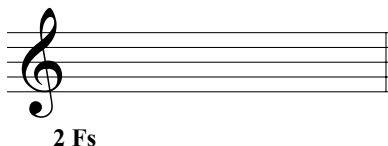
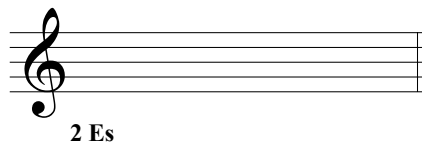
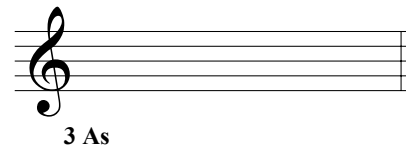
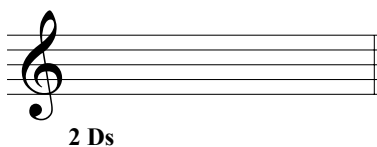
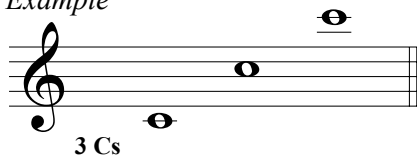


2. Draw a treble clef at the beginning of the staff and write the letter name of each note.



3. Draw the indicated notes. Use ledger lines to draw the specified number of pitches without duplication.

*Example*




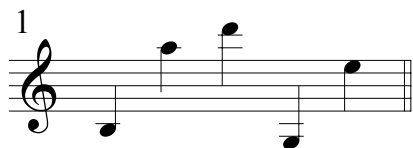
*Finale® Worksheets*, Copyright © 2009 by MakeMusic, Inc.

MakeMusic grants permission to duplicate this worksheet for non-profit, educational use only, provided each copy includes this copyright notice. Copies may not be sold or included in any materials offered for sale to the general public.

# Musical Words - Treble Clef II

Each group of notes spells a word.  
Write the word that each group spells.

Example   
B E A D

1 

-----

2 

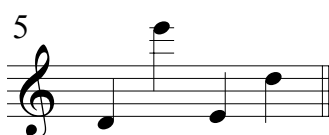
-----

3 

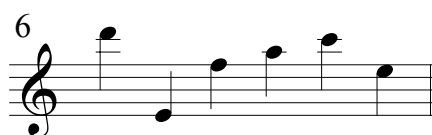
-----

4 

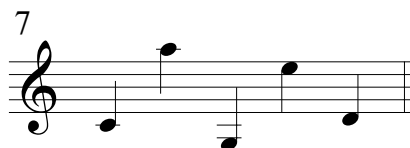
-----

5 

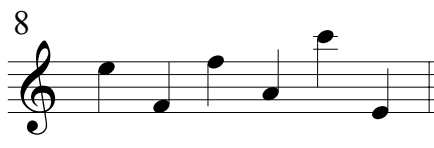
-----

6 

-----

7 

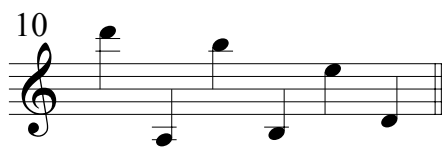
-----

8 

-----

9 


-----

10 

-----

11 

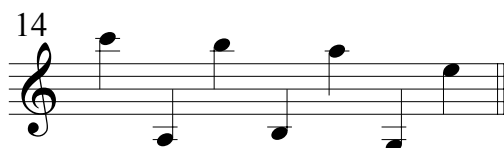
-----

12 

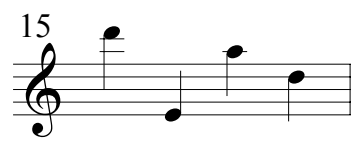
-----

13 

-----

14 

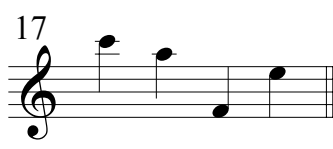
-----

15 

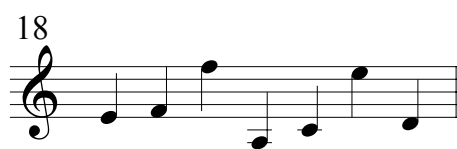
-----

16 

-----

17 

-----

18 

-----

Finale® Worksheets, Copyright © 2009 by MakeMusic, Inc.

MakeMusic grants permission to duplicate this worksheet for non-profit, educational use only, provided each copy includes this copyright notice.  
Copies may not be sold or included in any materials offered for sale to the general public.

# Note Reading Worksheet

## Bass Clef Exercise #1

G                      B                      D                      F                      A

Good                      Boys                      Do                      Fly                      Airplanes

LINES: Write each note's name underneath

A                      C                      E                      G

All                      Cows                      Eat                      Grass

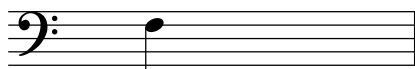
SPACES: Write each note's name underneath

ALL NOTES: Write each note's name underneath. Each measure's notes spell a word.

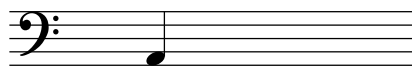
## Name Pitches II - Bass Staff

Name each pitch.

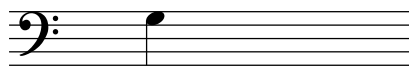
1



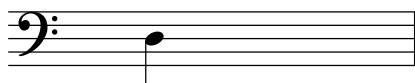
2



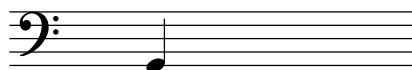
3



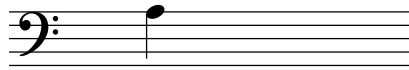
4



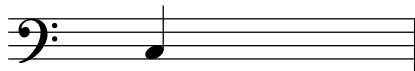
5



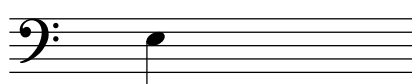
6



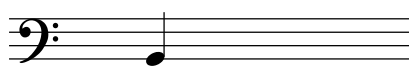
7



8



9

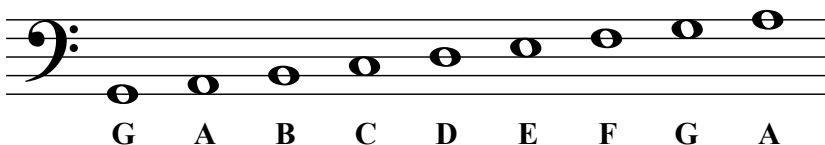


# The Staff - Bass Clef

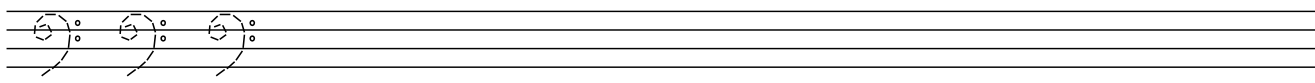
A **clef** appears at the beginning of each staff. The clef shown here is a **bass clef**.



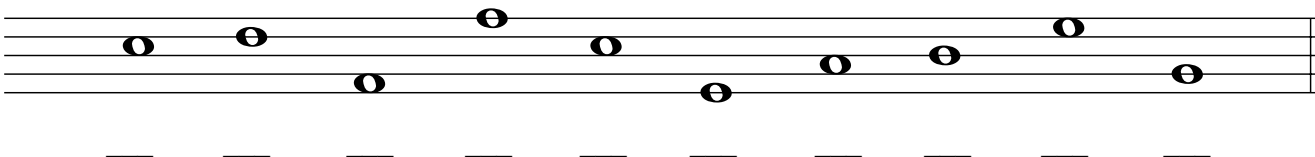
Each note on the bass clef staff has a letter name.



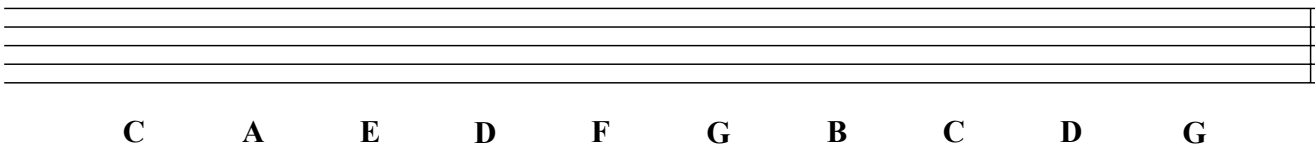
1. Practice drawing the bass clef sign by tracing over the guidelines. Draw five more in the remaining space.



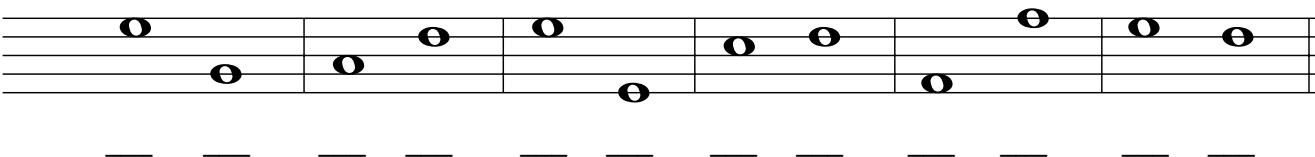
2. Draw a bass clef at the beginning of the staff and write the letter name of each note.



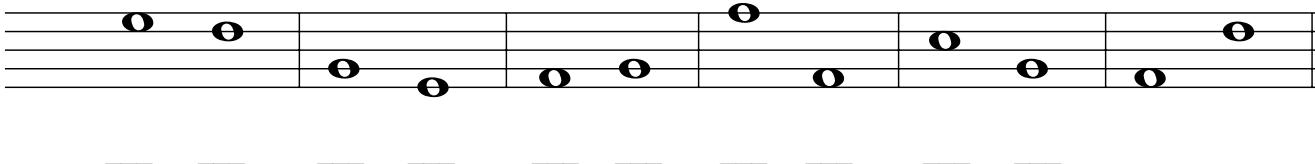
3. Draw the bass clef at the beginning of the staff and then draw the notes indicated.  
If a note can be drawn in more than one place on the staff, choose which one you want to draw.



4. Draw the bass clef at the beginning of the staff.  
Write the letter name for each note, then circle the higher note in each pair.



5. Draw the bass clef at the beginning of the staff.  
Write the letter name for each note, then circle the lower note in each pair.



*Finale® Worksheets*, Copyright © 2009 by MakeMusic, Inc.

MakeMusic grants permission to duplicate this worksheet for non-profit, educational use only, provided each copy includes this copyright notice. Copies may not be sold or included in any materials offered for sale to the general public.

# Note Reading Worksheet

## Bass Clef Exercise #2

Good                      Boys                      Do                      Fly                      Airplanes

LINES: Write each note on the correct line using quarter notes. Notes below D should have a stem on the right side facing up. Notes on or above the D line should have the stems facing down from the left side.

G      D      G      D      G      D      B      F      B      F      D      G      F      D      B      A

A      G      B      G      G      B      D      B      A      B      G      F      A      F      D      B

All                      Cows                      Eat                      Grass

SPACES: Write each note in the space. Use quarter notes again. Make sure the stems are correct.

A      G      C      E      A      C      A      E      C      A      G      A      G      A      C      E

A      C      A      C      G      E      G      E      E      C      A      G      E      A      C      A

ALL NOTES: Write each note on the line or space. This time write half notes.

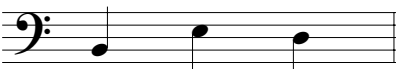
B      E      A      D      A      G      E      C      A      G      E      B      A      D


B      E      G      A      C      E      B      E      D      D      A      D

F      E      E      D      C      A      B      B      A      G      E      D      E      A      D      B      A      G      G      A      G      E

# Musical Words - Bass Clef I


Each group of notes spells a word.  
Write the word that each group spells.


Example   
B E D


1   
\_ \_ \_

2   
\_ \_ \_

3   
\_ \_ \_

4   
\_ \_ \_


5   
\_ \_ \_


6   
\_ \_ \_


7   
\_ \_ \_ \_

8   
\_ \_ \_ \_


9   
\_ \_ \_ \_


10   
\_ \_ \_ \_


11   
\_ \_ \_ \_


12   
\_ \_ \_ \_


13   
\_ \_ \_ \_

14   
\_ \_ \_ \_

15   
\_ \_ \_ \_

16   
\_ \_ \_ \_

17   
\_ \_ \_ \_

18   
\_ \_ \_ \_

*Finale® Worksheets*, Copyright © 2009 by MakeMusic, Inc.  
MakeMusic grants permission to duplicate this worksheet for non-profit, educational use only, provided each copy includes this copyright notice.  
Copies may not be sold or included in any materials offered for sale to the general public.

# Spell Words with Bass Pitches

Write the words that the pitches spell.

1



2



3



4



5



6



7



8



9



10



11



12



13



14



15



16



17



18



19



20



21



22



23



24



25



26



27



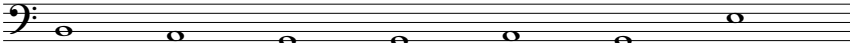
28

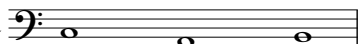
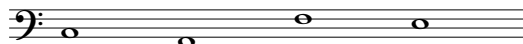


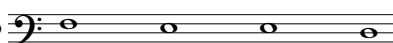
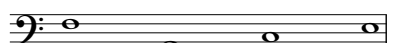
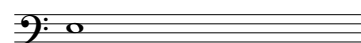


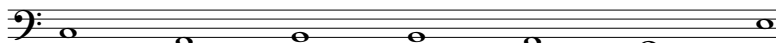
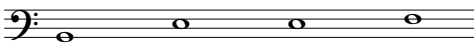
# A MUSICAL STORY

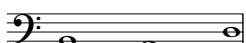
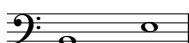
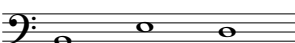
Complete the story by filling in the note names underneath each measure.

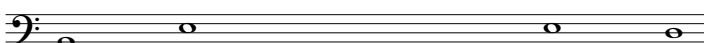
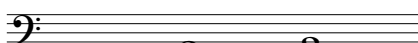
I went on a fun trip with my friend. We packed our 

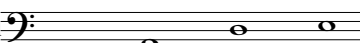
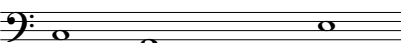
and climbed into a  . Along the way we stopped at a 

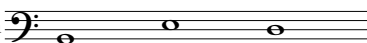
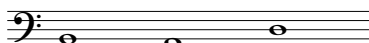
to  our  . We had an 

 and 

sandwich. Ugh! The food was really  . We felt like we should  in 

so I  my friend to cut the 

and return home. I feared that i would  and felt like an animal in a 

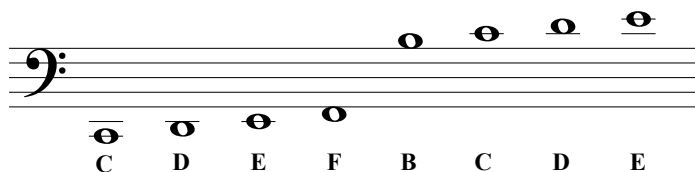
. Suddenly I awoke and found myself at home in  . It had only been a 

dream.

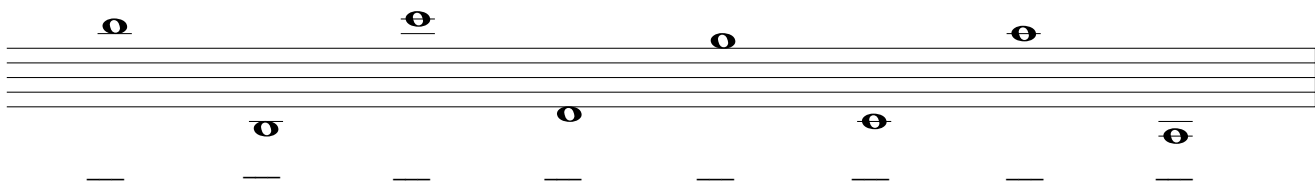
# Bass Clef - Ledger Lines

**Ledger lines** can be used to extend the upper and lower ranges of a staff.

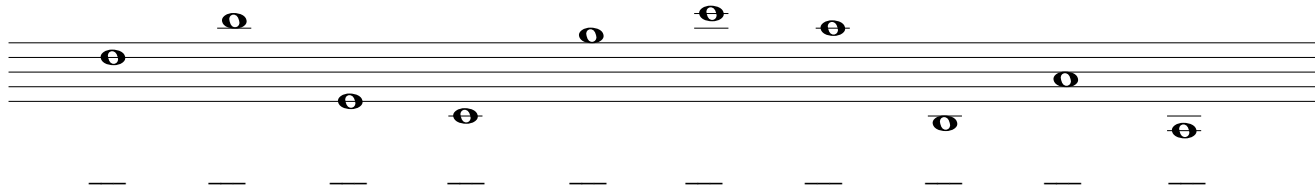
This example includes notes which can be written above and below the bass clef using **ledger lines**.



1. Draw a bass clef at the beginning of the staff and write the letter name of each note.

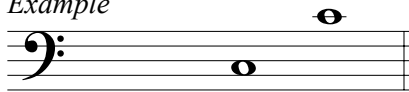


2. Draw a bass clef at the beginning of the staff and write the letter name of each note.



3. Draw the indicated notes. Use ledger lines to draw the specified number of pitches without duplication.

*Example*



3 Cs



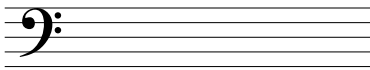
3 Ds



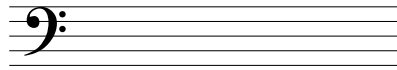
2 As



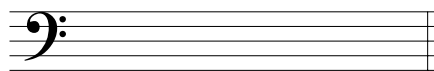
2 Bs



2 Fs



2 Bs



2 Gs




3 Cs

*Finale® Worksheets*, Copyright © 2009 by MakeMusic, Inc.  
 MakeMusic grants permission to duplicate this worksheet for non-profit, educational use only, provided each copy includes this copyright notice.  
 Copies may not be sold or included in any materials offered for sale to the general public.

# Musical Words - Bass Clef II

Each group of notes spells a word.  
Write the word that each group spells.

Example   
D E E D

1 

\_\_\_\_\_

2 

\_\_\_\_\_

3 

\_\_\_\_\_

4 

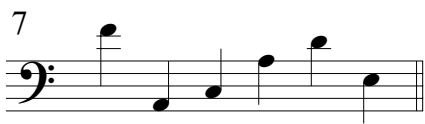
\_\_\_\_\_

5 

\_\_\_\_\_

6 

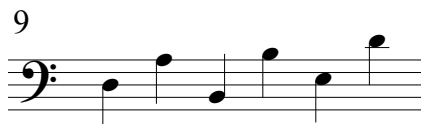
\_\_\_\_\_

7 

\_\_\_\_\_

8 

\_\_\_\_\_

9 

\_\_\_\_\_

10 

\_\_\_\_\_

11 

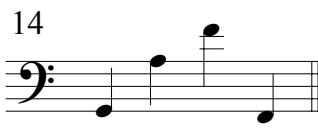
\_\_\_\_\_

12 

\_\_\_\_\_

13 

\_\_\_\_\_

14 


\_\_\_\_\_

15 

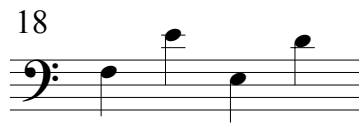
\_\_\_\_\_

16 

\_\_\_\_\_

17 

\_\_\_\_\_

18 

\_\_\_\_\_

*Finale® Worksheets*, Copyright © 2009 by MakeMusic, Inc.  
MakeMusic grants permission to duplicate this worksheet for non-profit, educational use only, provided each copy includes this copyright notice.  
Copies may not be sold or included in any materials offered for sale to the general public.